



The George Institute Research & Consultancy Services

The George Institute for Global Health is a leading, global health and medical research institute whose mission is to improve the health of millions of people worldwide.

We do this by providing high quality evidence that can inform the better prevention and management of common, chronic conditions. A large part of our research focuses on health services and health systems research in Australia and globally.

Research and Consultancy Services at The George Institute Australia offers a wide range of tailored research, evaluation & consultancy services that are underpinned by strong methodological rigour and delivered by highly experienced staff members.



The George Institute
for Global Health



Research and Consultancy Services

Research and Consultancy services at The George Institute include:

- ▶ Discovery, implementation, evaluation and translational research – from design through to reporting;
- ▶ Advisory services for all content areas and programs;
- ▶ Evaluation of health programs;
- ▶ Cost-effectiveness of healthcare interventions;
- ▶ Data management and statistics;
- ▶ Health economic analyses;
- ▶ Review of health policies;
- ▶ Evidence reviews – from rapid appraisals through to systematic reviews and meta-analyses;
- ▶ Key stakeholder engagement and community consultations;
- ▶ Qualitative research methods and analyses;
- ▶ Project management;
- ▶ Developing and implementing policy, project and program logic models;
- ▶ Knowledge exchange activities including oral presentations and interactive training workshops.



Our Capabilities

The George has a proven track record in:

- ▶ Providing the best evidence to guide critical health decisions and engaging with decision makers to enact real change;
- ▶ Providing rigorous evidence around the appropriateness and effectiveness of healthcare interventions;
- ▶ Leadership and conduct of research and consultancy projects – small and large scale – that have been operationalised across various sectors of the health system;
- ▶ Delivering projects focused on the needs of key stakeholders, ensuring strict adherence to milestones, deliverable timelines and budget.

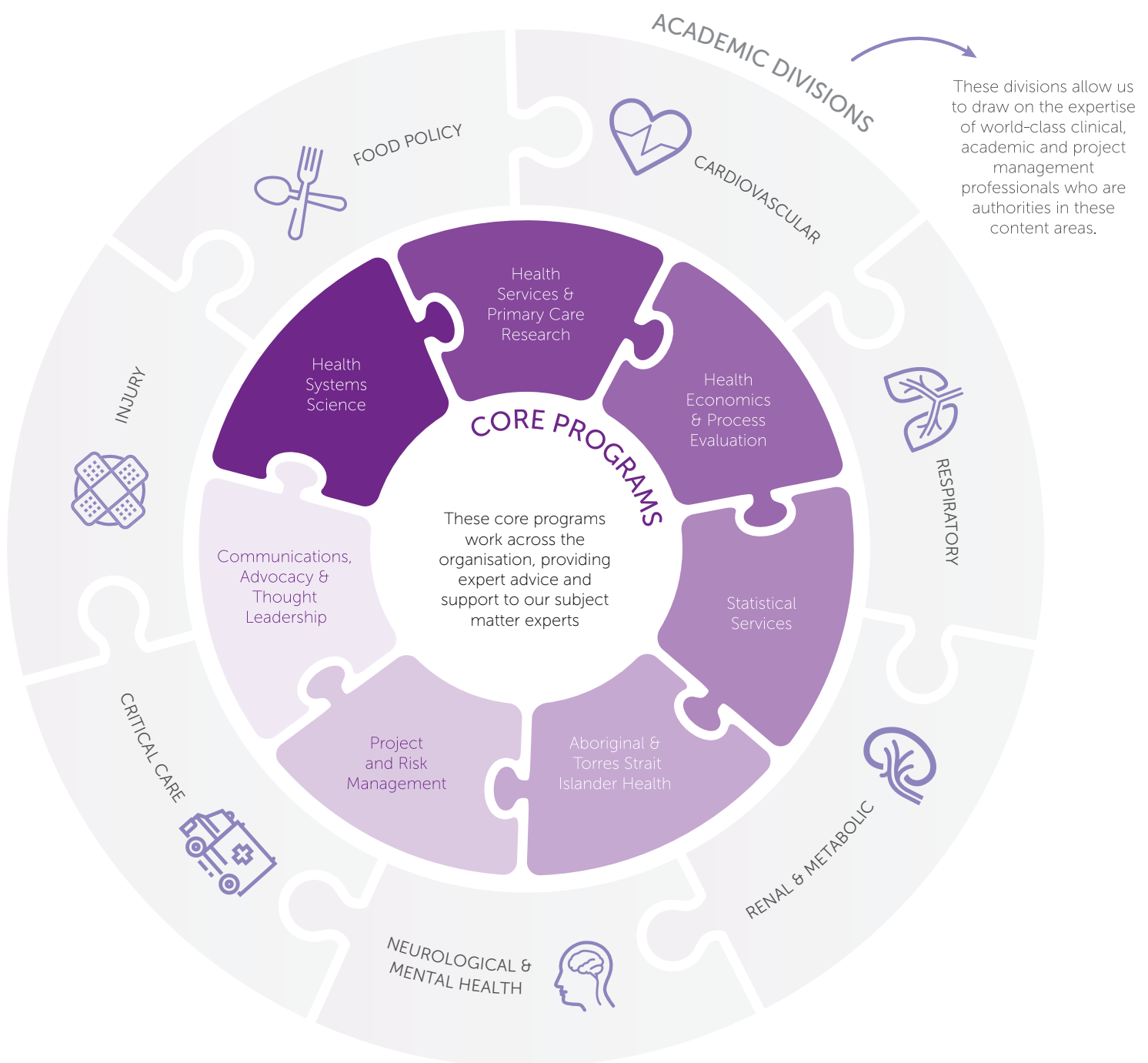
Examples of our work can be provided upon request.

Why engage our Research & Consultancy Services?

- ✓ Independent research and advisory services;
- ✓ Clinical and methodological expertise;
- ✓ Rigorous approach to all endeavours – ensuring ethical and high-quality outputs;
- ✓ Leading research organisation recognised globally for its' impact on health practice and policy;
- ✓ Ability to work collaboratively with a range of research partners.

How our centralised Research & Consultancy Services benefit you

- ✓ Single point of contact from which tailored services will be coordinated to meet your needs
- ✓ Our experts will consider your needs and use their expertise to provide a suitable service, to the highest standards, in an efficient manner
- ✓ Consistency in approach to contract work and quality assurance processes
- ✓ A commitment to relationship building, stakeholder engagement and management
- ✓ Allows our expert researchers to focus on delivering high-quality product



The George has amassed a network of over **1100 collaborators** - including local GPs, pharmacies, hospitals and leading academic institutes - from which we can draw on for expertise outside Institute core areas and extend the scope and impact of research.

Our model of delivering services will provide you with the most relevant multi-disciplinary team and will ensure the efficient use of resources.

About The George Institute for Global Health

- ▶ A non-profit organisation headquartered in Sydney, with projects in more than 50 countries.
- ▶ Uniquely focussed on prevention and improving health outcomes for people at risk of, or living with, chronic disease and injury.
- ▶ Research program directors who are key opinion leaders in their fields of cardiovascular, neurological, respiratory, renal disease and diabetes as well as critical care, injury and nutrition.
- ▶ Academic staff who have extensive experience in observational and interventional research; utilising traditional and pragmatic quantitative, qualitative and economic methods.
- ▶ Expansive network of collaborators and partners across industry, government, health and academia enabling wide reach in terms of access to patients and at-risk populations, as well as pathways to research translation.
- ▶ Established reputation for conducting high-quality population, health services and clinical research as well as health system, service and program evaluations, with outputs that can be translated into practice within short periods of time.



7000+ publications and other academic outputs since 1999

Unrivalled record of research impact in Australia

Top-ranked organisation by NHMRC

Contact Details

For all enquiries relating to Research & Consultancy Services please contact:

👤 Dr Karena Conroy

Head, Commissioned Research

✉ kconroy@georgeinstitute.org.au

☎ +61 2 8052 4664